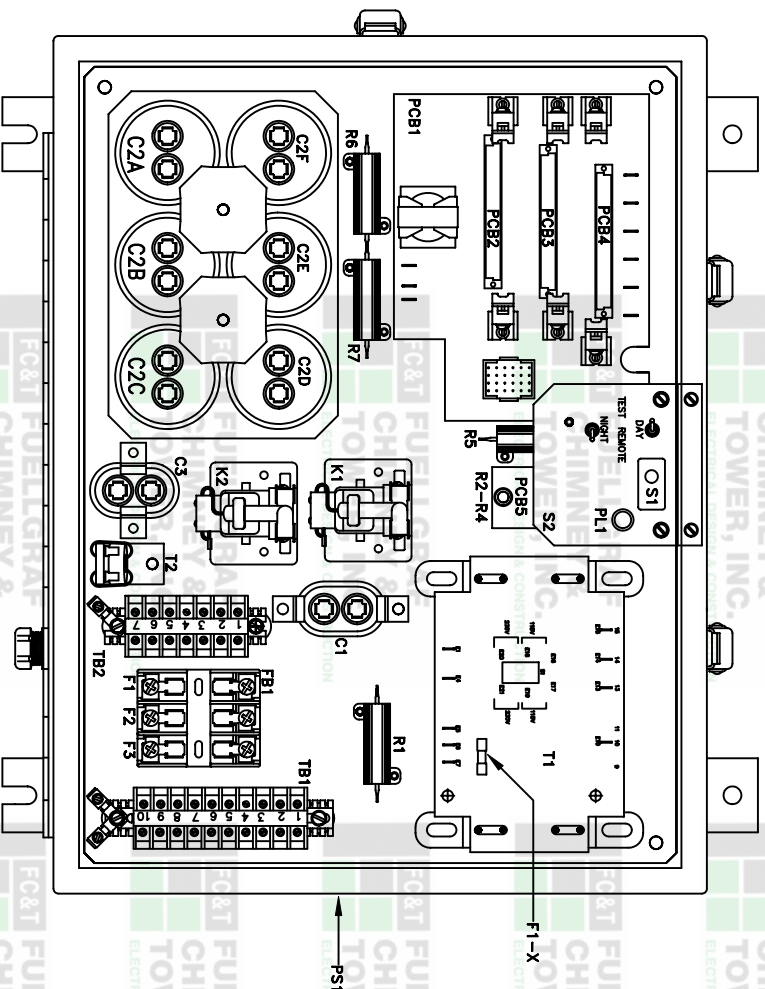


FG-2000B POWER SUPPLY COMPONENT LAYOUT



FG-2000B POWER SUPPLY PARTS LIST

ITEM #	DESCRIPTION	PART#
C1	Capacitor, Resonating 5uf	CA505B661CDG
C2A-F	Capacitor, Day Mode 70uf	CA706A4441EK
C3	Capacitor, Night Mode 4uf	77-3911
F1-F2	Fuse 12A For 24VDC Input Power	DP-4136
F1-F2	Fuse 3.2A For 480VAC Input Power	77-2041
F1-F2	Fuse 6A For 240VAC Input Power	77-1167

FG-2000B PARTS CONTINUED

ITEM #	DESCRIPTION	PART#
F1-F2	Fuse 6A For 240VAC Input Power	77-2041
F1	Fuse 6A For 120VAC Input Power	77-2040
F1X	Fuse 630mA, Transformer	DP-1019
FB1	Fuse Block	77-4200
K1,K2	Relay, Mode & Bleed	77-2013
PCB1	Printed Circuit Motherboard	277-5016
PCB2	Printed Circuit Trigger Board	277-5014-003
PCB3	Printed Circuit Sync Monitor Board	277-4136
PCB3	Printed Circuit Fault Monitor (AOL Only)	277-3975
PCB4	Printed Circuit High Voltage Board	277-3937
PCB5	Printed Circuit Diode Board	277-3939
PL1	Power Indicator Lamp	77-2029
PEC	Photocell	77-3259
PS1	Power Supply Complete	277-504861A
R1	Resistor, 50 Ohm, 50 Watt	RJ000001
R2,R3,R4	Resistor, 20 Ohm, 40 Watt	77-2759
R5	Resistor, 1K Ohm, 50 Watt	RW000002
R6,R7	Resistor, 50K Ohm, 50 Watt	RW50RB0502GF
S1	Switch Interlock	77-2644
S2	Switch Interlock Assembly	277-3990
T1	Transformer Power 60Hz 120/240VAC	77-5002
T1	Transformer Power 60Hz 240/480VAC	77-5066
T1	Transformer Power 50Hz 240/480VAC	77-5067
T2	Transformer, Current Sense	277-3958
TB1/TB2	Terminal Block Section	77-2557
TB1/TB2	Barrier End	77-2558
TB1/TB2	Retaining Clip	77-2559